

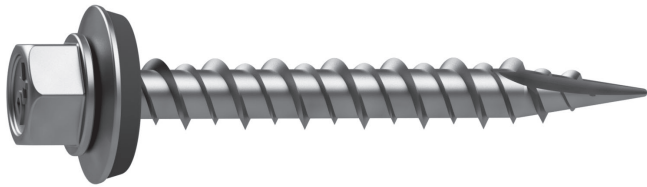
FASTENERS

FOR METAL ROOFING AND SIDING

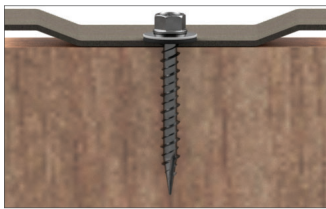


METAL TO WOOD

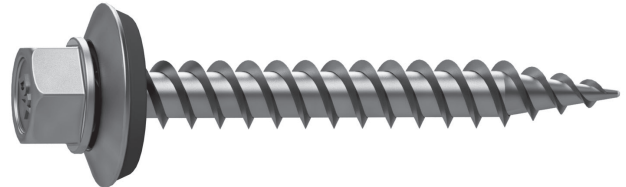
TRU-GRIP® TYPE 17 HiLo



- **Metal to wood** (eg. Roof / wall panel to wood)
- **High HWH (Hex Washer Head)** ensures positive contact with driver bit and reduces paint scuffing
- **Type 17 fastener point** design is extra sharp for quick installation
- **Hi Lo thread** design displaces less material providing high pullout values and less energy requirement for tools
- **EPDM bonded washer** provides weathertight seal in the harshest conditions
- Available in #10 x 1" to 4" (1/4" head")
- Available in unpainted or painted
- Zinc coated for corrosion resistance



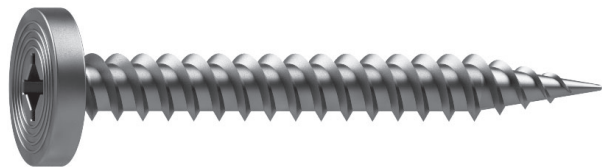
TRU-GRIP® GT



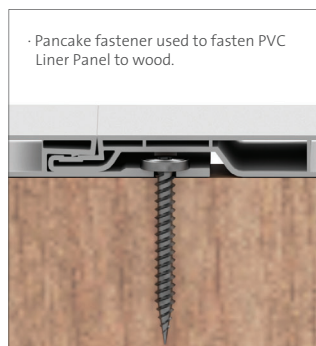
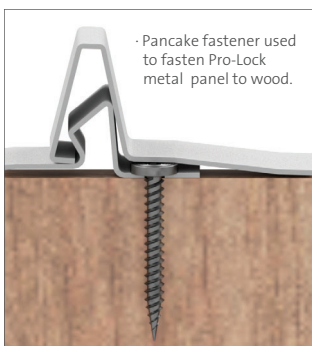
- **Metal to wood** (eg. Roof / wall panel to wood)
- **High HWH (Hex Washer Head)** ensures positive contact with driver bit and reduces paint scuffing
- **EPDM bonded washer** provides weathertight seal in the harshest conditions
- **Non-walking point** for fast material engagement
- Available in #14 x 1" to 3" (3/8" head)
- Available in unpainted or painted
- Long-life coated for extended corrosion resistance



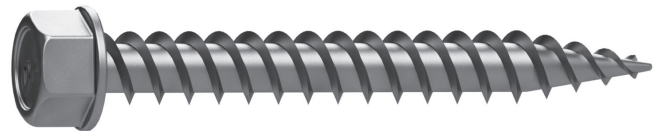
PANCAKE HEAD



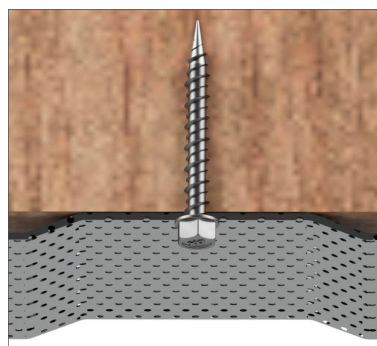
- **Metal to wood** (eg. Roof / wall panel to wood)
- **Combo drive** for convenience
- **Pancake head** for low profile requirements
- **Non-walking point** for fast material engagement
- Available in #10 x 1" & 1-1/2"
- Available in zinc or stainless steel



NON-WASHERED TRU-GRIP® GT

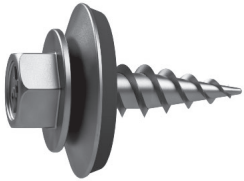


- **Metal to wood** (eg. Soffit / interior panels / wall applications)
- **High HWH (Hex Washer Head)** ensures positive contact with driver bit and reduces paint scuffing
- Available in #9 x 1-1/2" (1/4" head)
- Available in unpainted or painted
- Long-life coated for extended corrosion resistance



METAL TO METAL

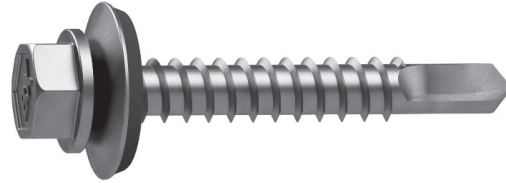
STITCH SCREWS



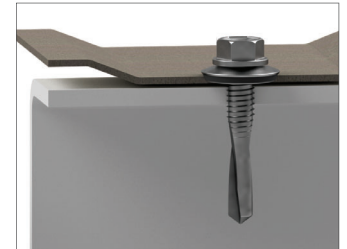
- **Metal to metal** (eg. Roof / wall panel to panel)
- **High HWH (Hex Washer Head)** ensures positive contact with driver bit and reduces paint scuffing
- **EPDM bonded washer** provides weathertight seal in the harshest conditions
- Available in #12 x 3/4" (1/4" head)
- Available in unpainted or painted
- Long-life coated for extended corrosion resistance



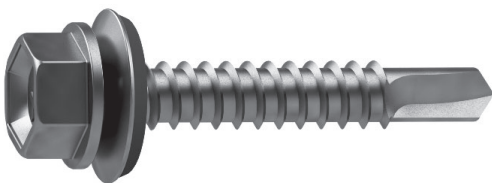
SELF-DRILLING FASTENERS



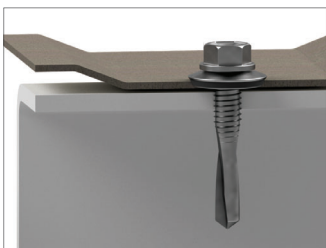
- **Metal to metal** (eg. Roof / wall panel to panel / structural steel)
- **Drilling capacity** up to 0.500"
- **High HWH (Hex Washer Head)** ensures positive contact with driver bit and reduces paint scuffing
- **EPDM bonded washer** provides weathertight seal in the harshest conditions
- Available in various sizes, lengths and drill points
- Available in unpainted or painted
- Long-life coated for extended corrosion resistance



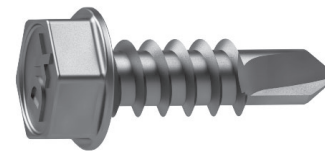
METAL TO METAL FASTENERS



- **Metal to metal** (eg. Roof / wall panel to structural steel)
- **Drilling capacity** up to 0.250"
- **High HWH (Hex Washer Head)** ensures positive contact with driver bit and reduces paint scuffing
- **EPDM bonded washer** provides weathertight seal in the harshest conditions
- Available in various sizes, lengths and drill points
- Available in unpainted or painted
- Zinc or long-life coated for extended corrosion resistance



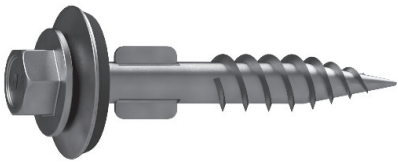
NON-WASHERED SELF-DRILLING



- **Metal to metal**
- **Drilling capacity** up to 0.160"
- **High HWH (Hex Washer Head)** ensures positive contact with driver bit and reduces paint scuffing
- Available in various sizes, drill points and lengths
- Available in unpainted or painted
- Available in zinc or long-life coating for extended corrosion resistance

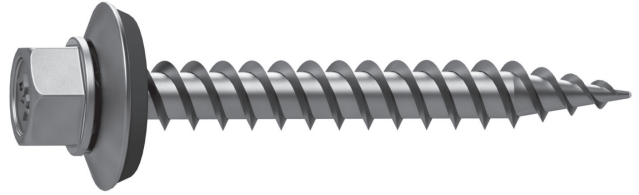
MISCELLANEOUS FASTENERS

ONE-STEPPER



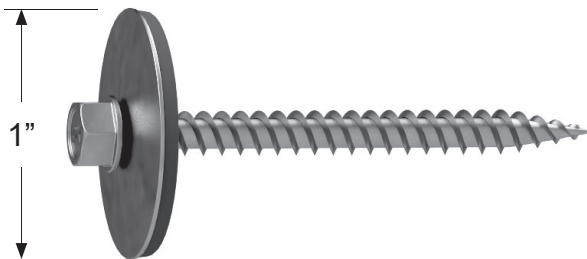
- **PVC to wood** (eg. Wall panel to wood)
- **High HWH (Hex Washer Head)** ensures positive contact with driver bit and reduces paint scuffing
- **EPDM bonded washer** provides weathertight seal in the harshest conditions
- Available in #12 x 1-1/4" (1/4" head)
- Available in stainless steel or painted

TRU-GRIP GT STAINLESS STEEL



- **Metal to wood** (eg. Roof / wall panel to wood)
- **High HWH (Hex Washer Head)** ensures positive contact with driver bit and reduces paint scuffing
- **EPDM bonded washer** provides weathertight seal in the harshest conditions
- **Non-walking point** for fast material engagement
- Available in #9 x 1" to 1-1/2" (1/4" head)
- Will not rust

TRU-GRIP GT OSW



- **PVC or polycarbonate to wood**
- **High HWH (Hex Washer Head)** ensures positive contact with driver bit and reduces paint scuffing
- **EPDM bonded washer** provides weathertight seal during expansion/contraction
- Available in #10 x 1-1/2" to 2" (1/4" head)
- Available in unpainted or painted
- Long-life coated for extended corrosion resistance

DRILL POINT INFO

AB Point



- **Metal to wood**
- Non-walking point for fast material engagement

Type 17 Point



- **Metal to wood**
- Non-walking point for fast material engagement
- Flute for material discharge

Drill Point



- **Metal to metal**
- Drill point has precise cutting edges to improve drill performance with less effort

FASTENER PAINT SYSTEM

YOU CHOOSE THE COLOUR — WE DELIVER ON PERFORMANCE

KEMCLAD® ACRYLIC BAKING ENAMEL BY **SHERWIN-WILLIAMS**.

Wide variety of colors. Optional custom colors, all with a premium paint finish that will last.

Our fasteners are primed, painted, then baked using KEMCLAD BAKING ENAMEL by Sherwin Williams. It's an acrylic, high-quality baking enamel designed for metal applications with complex shapes producing excellent resistance to cracking, flaking, or chipping. Domtek's state-of-the-art robotic paint system ensures an efficient and consistent paint spray every time.

If you want superior performance that will withstand the elements and a wide range of colors to choose from, don't settle for anything less. **Choose Domtek fasteners for your next project.**

ADVANTAGES:

- Hard, tough, mar resistant finish
- Good one coat protection
- Good exterior durability
- High gloss and low gloss capability
- Good flexibility
- Very good flow and leveling properties
- Excellent corrosion resistance
- Ideal for a wide range of metal products both interior and exterior applications



RESIDENTIAL



AGRICULTURAL



COMMERCIAL



INDUSTRIAL



ARCH BUILDINGS



20 YEAR LIMITED WARRANTY



LIFETIME OF SAVINGS



MAINTENANCE FREE



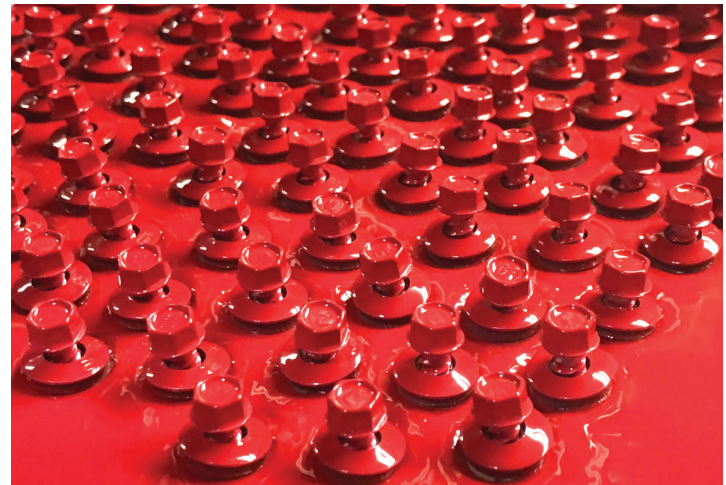
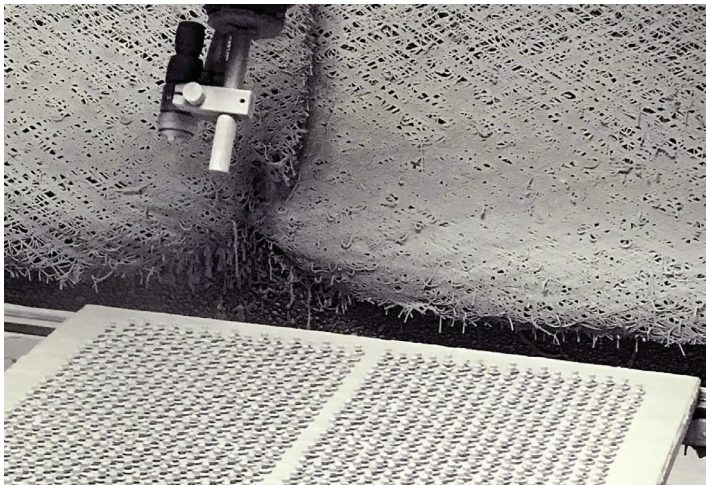
DURABLE



COLOUR MATCHED



WATERPROOF



NOTE: Use of impact tools is not recommended when installing painted fasteners and will void paint warranty.

DISCLOSURE STATEMENT:

Specific job conditions should be considered, and appropriate safety factors applied when specifying fasteners. In actual applications, proper installation techniques must be used to assure adequate performance of the fastener. Final selection of fasteners or accessories for use is ultimately the decision of the purchaser. While Domtek Building Products may assist by providing information for comparison, Domtek makes no suggestions or warranties pertaining to the suitability of its products for any particular application.