

# KODIAK

## PVC PANELS

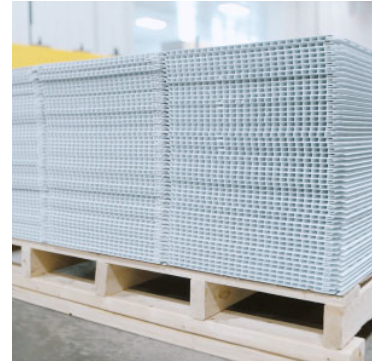


# INSTALLATION GUIDE



## WHAT TO DO WHEN KODIAK ARRIVES

- It's recommended that Kodiak is installed at what will be its normal room temperature. Before installation, the building and materials **MUST** be conditioned for a minimum of 72 hours before installation can begin. This is to ensure expansion and contraction does not occur after installation has been completed.
- If Kodiak panels have been packaged and shipped on a skid, cut any straps and remove from crating and packaging so the panels are not restricted from movement.
- When handling Kodiak, be sure to use proper safety measures and review your installation guide before you begin.

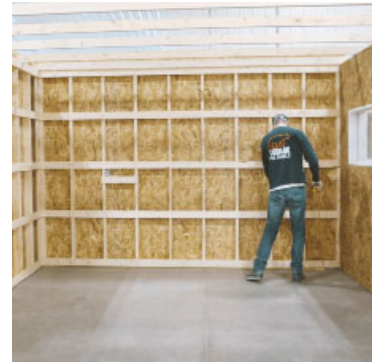


## TOOLS AND MATERIALS REQUIRED

- work table
- tape measure
- hammer
- square
- chalkline
- level
- utility knife
- tin snips
- caulking gun
- putty knife
- radial saw
- multi-tool or jigsaw
- drill /screw gun
- marking pen
- ladders and /or scaffolding
- low-profile fasteners
- white neutral cure silicone

## PREPARATION

- Check surfaces for straightness and install strapping where necessary. Make sure that all vapour barriers, etc are installed to code prior to Kodiak being installed.
- For installing Kodiak, it's recommended that 1 inch x 4 inch strapping is used not exceeding 24 inches apart or 7/16 inch OSB can also be used as solid sheathing. Check building codes in your area before you begin to ensure installation adheres to all codes and practices.
- When installing electrical or lighting, ensure you install adequate backing at each location.
- For fastening Kodiak panels, a low-profile fastener is required. Most applications will only require a zinc-plated fastener. For high moisture applications, it's recommended to use stainless steel fasteners.
- Use a white neutral cure silicone to seal all corners, fixtures, and small holes.



## INSTALLATION BASICS

- **IMPORTANT WARNING: DO NOT OVER TIGHTEN FASTENERS. DO NOT FACE NAIL.**
- All panels should be allowed to slide free after fastening to allow for expansion and contraction. Always fasten in the center of the nailing slot.
- Fasteners should penetrate a minimum of 1" into solid backing and be no more than 24" apart and at least 4" from the end of the panel. Before fastening, double-check to make certain that Kodiak Panel is interlocked along its entire length. Keep the joints uniform to ensure that all joints remain parallel.

## INSTALLATION BASICS CONT'D

- Leave a minimum of ¼" clearance at end of all panels to allow for expansion and contraction.
- Protective eyewear and gloves should always be worn when cutting Kodiak.

## TRIM INSTALLATION

1. Depending on your application, begin by installing Drip Trim or J-Trim along the bottom of the wall.
  2. Next, install J-Trim along the top of the wall OR use an Inside Corner Cove. **The Inside corner cove trim is required for CFIA & FDA approvals.**
- **WHEN INSTALLING KODIAK PANELS ON WALLS AND CEILINGS, INSTALL CEILING PANELS FIRST BEFORE INSTALLING INSIDE CORNER COVE TRIM ON THE WALL.**
  - Also available is the Crown Base and Cap which can be installed after installation of wall and ceiling panels. If selected, ceiling and/or base trims are not required. When installing the crown base, simply fasten after the panels are in place.

## CORNER TRIM OPTIONS

When selecting a corner trim there are a few options before you begin:

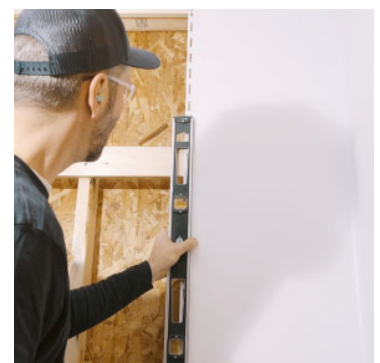
- **DOUBLE J-TRIMS**
  - At corners, install J-Trims vertically to finish the ends of the butt joints prior to the first panel being installed.
- **INSIDE CORNER COVE**
  - Install one corner panel first. Overlay corner cove trim on panel and fasten trim thru nailing flange. Then install second corner panel.
- **2-PC MULTI-CORNER**
  - Fasten female end of trim in corner prior to installing panels. Once panels are in place, install male end of the multi-corner trim.



2-pc Multi-Corner Trim

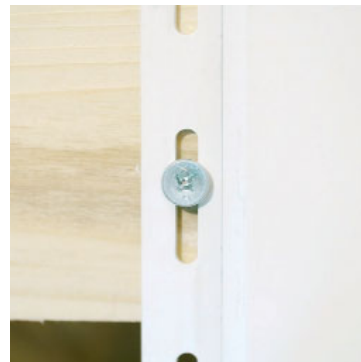
## INSTALLING THE FIRST PANEL

1. When installing Kodiak panels on walls AND ceilings, remember to install ceiling panels first.
  2. Measure and cut the panel to the appropriate length. Be sure to allow ¼ inch space for expansion of sheets.
- **REMEMBER TO MAKE SURE PANELS ARE INSTALLED AT WHAT WILL BE ITS NORMAL ROOM TEMPERATURE.**
3. Starting at a corner, insert the first panel into the trims and slide the panel along until it's flush with the wall. Its important to ensure the first panel is square so the remaining panels will be level. Use a putty knife to help slide the panel into the trim if needed.



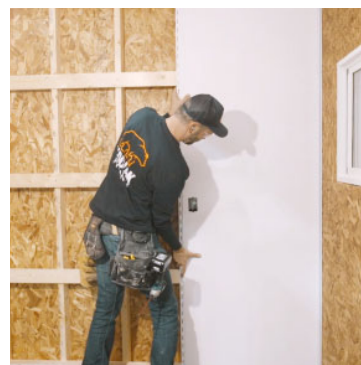
## INSTALLING THE FIRST PANEL CONT'D

4. Using a Pancake Head fastener, **ALWAYS** fasten Kodiak panels in the center of the nailing flange. Fasteners should be installed at all strapping locations, not to exceed 24 inches apart. **DO NOT OVER TIGHTEN THE FASTENERS.**
5. If the ceiling is longer than your sheet length you can install an H-Trim on the end of the first course. Leaving  $\frac{1}{4}$ " for expansion, fasten the H-Trim on the other side to wood supports at 24" on center.



## INSTALLING NEXT PANEL

1. Before you install the second panel, ensure the first panel is completely fastened and level.
2. Interlock the panel so it's flush with the first panel.
3. Push panels together to ensure a clean joint.
4. Fasten panel in place.



## CUTTING AND TRIMMING PANELS AROUND OBJECTS

- Some examples are windows, doors, and electrical boxes.
  - For lighting, a hole saw bit works best
  - When cutting around windows or at corners, use tin snips for shaping trims
  - A jigsaw or multi-tool works best for cutting around electrical
- Be sure to overlap trims appropriately to ensure a proper fit.
  - An approved sealant should be used around all openings in high moisture applications



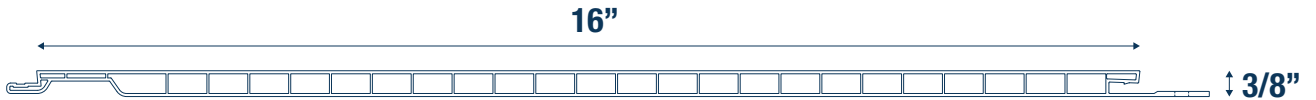
## CLEANING KODIAK IS SIMPLE

- Use a mild cleaning solution and water with a cloth, soft bristle brush, or spray wand.
- For tougher stains, contact your local Kodiak distributor for recommendations.
- Make sure to follow the precautionary label instructions on all cleaning agents you use.

## INSTALL VIDEO

Please watch our installation video for more detail on how to properly install Kodiak. You can view it at [www.domtek.com/kodiak](http://www.domtek.com/kodiak).

# SPECIFICATIONS



- KODIAK PVC Panels are 16" wide and come in 8', 10', 12', 14', 16', 18' and 20' lengths.
- Custom lengths are available.
- KODIAK PVC Panels are white with matching trims. Other colours are available.

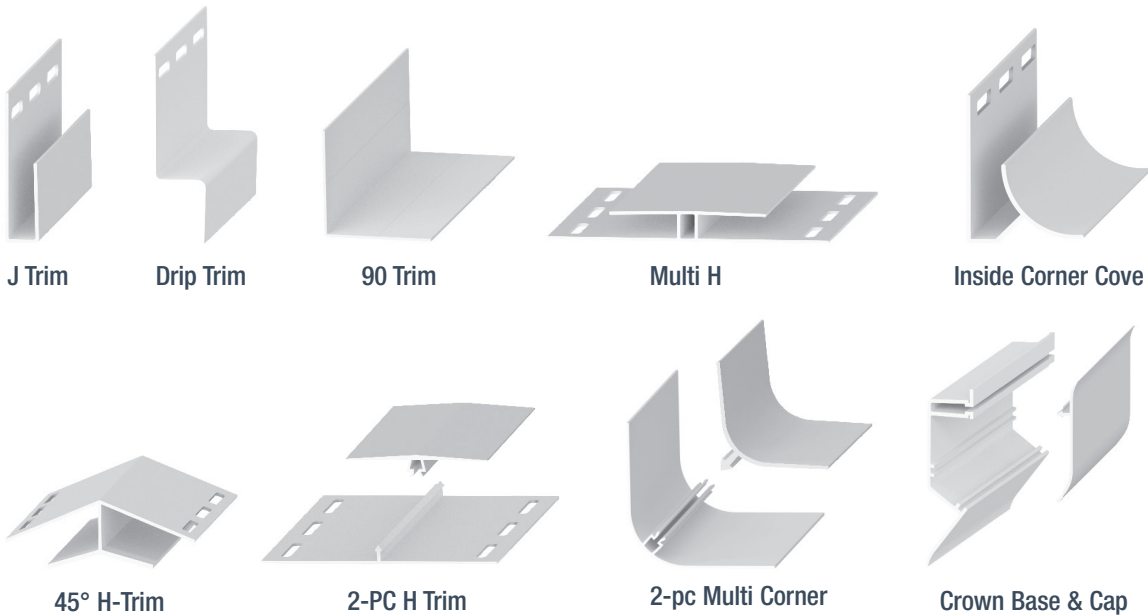
Kodiak's unique expansion channel allows for easy install and a tight connection between panels.

## Ratings

- Flame Spread Class A, values of 20 (CAN/ULC S102.2) & 15 (ASTM E84).
- Meets CFIA (Canada) and FDA (U.S.A.) approval requirements for indoor applications.
- 99.9% kill for bacteria and fungi using ISO 22196 test.

## Trims and Flashing

- All trims are 12' in length.



## Applications:



## Features & Benefits:



# WARRANTY

Kodiak PVC offers a 10-year limited warranty on the product. Kodiak PVC employs a comprehensive quality control program and attempts to ensure that all products are free from defects. However, users are expected to inspect all components before installation. If received products appear to be damaged or defective, Kodiak PVC shall be contacted for replacement immediately. Due to the varying nature of installations, Kodiak PVC makes no representation of warranty either expressed or implied, regarding suitability of installation for a particular use. No consideration will be provided for any claims, such as but not limited to; shipping, labour, handling, overhead, installation, lost profit, lost production and/or other losses or expenses.

## LIMITATIONS

Kodiak PVC Panels shall not be used:

- When the temperature during installation is below 41°F (5°C)
- When the ambient or surface temperature of the material will be above 122°F (50°C)
- When heaters, including radiant heaters, will be located less than 18" from the surface.
- When installed as a component of an air duct system

# INSTALLATION EXAMPLES

